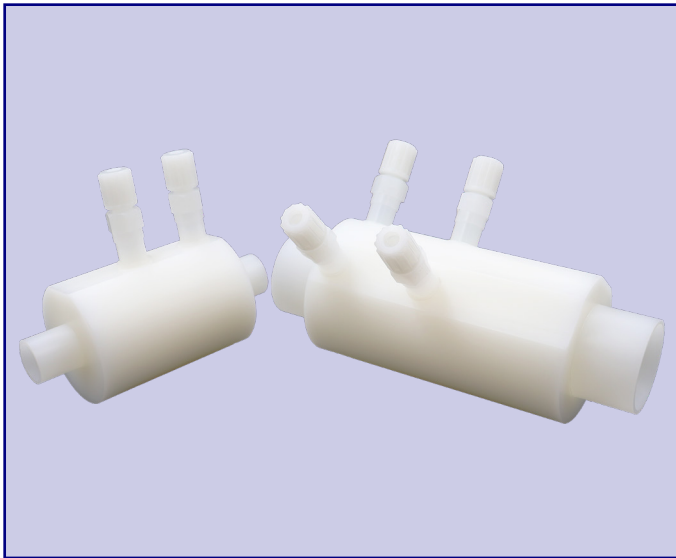


# HIGH PURITY FAUCET DIVERTER

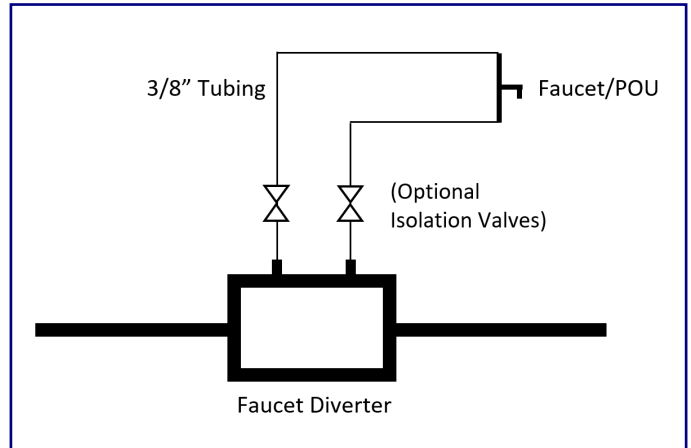


## TECHNICAL SPECIFICATIONS:

<b>Body Materials:</b>	Purad® (PVDF): 3/4" - 2-1/2" PolyPure® (PP): 3/4" - 2-1/2"
<b>End Connections:</b>	Metric (DIN) spigot standard <i>Optional: sanitary adapter</i>
<b>Tube Connection:</b>	3/8" Flare Single or double faucet
<b>Pressure Rating:</b>	150psi @ 68° F

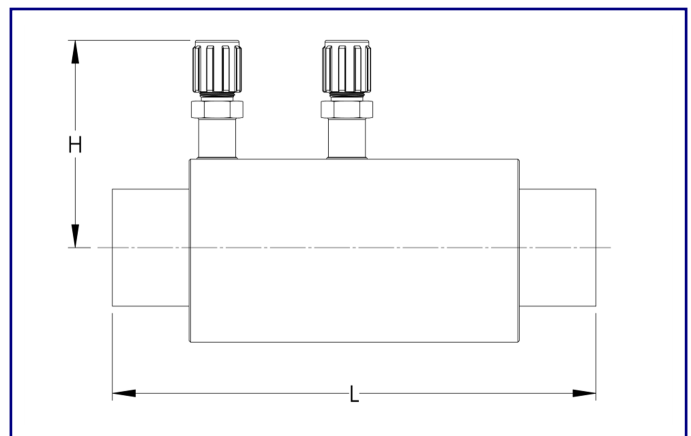
## STANDARD FEATURES:

- CFD optimized design to minimize pressure loss while maximizing flow through the faucet
- No wetted metal components
- Creates pressure differential to ensure recirculating flow to and from the faucet(s)
- Made from high purity PVDF or natural polypropylene material
- Ships cleaned and bagged
- Utilizes industry standard tubing connections
- Options to connect one or two faucets with a single diverter for cost saving



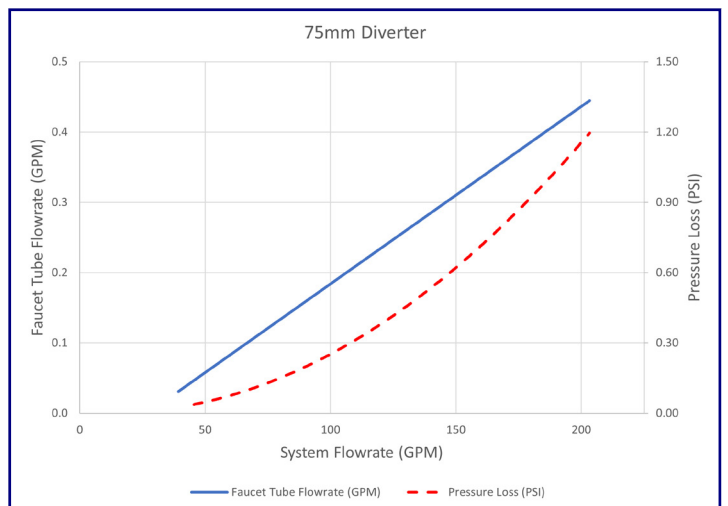
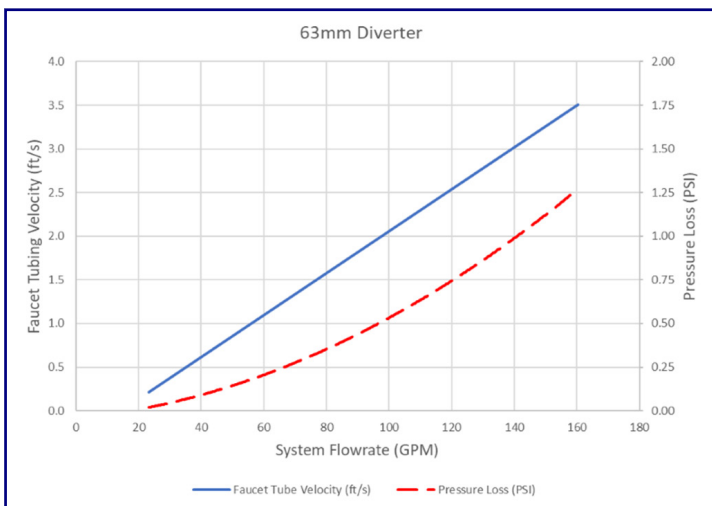
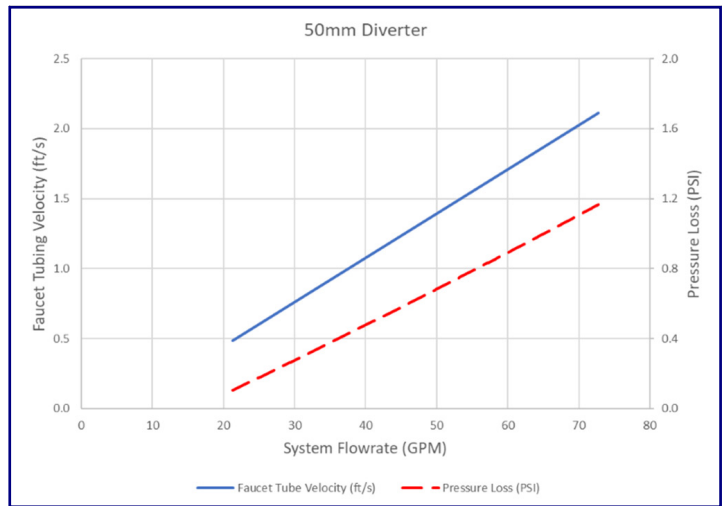
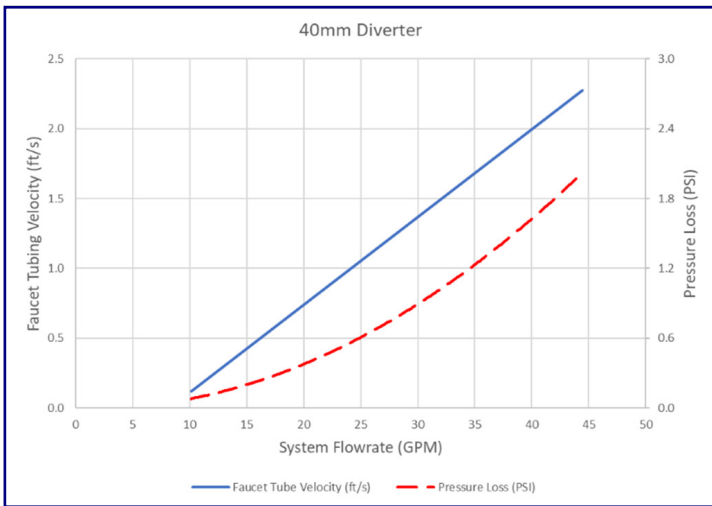
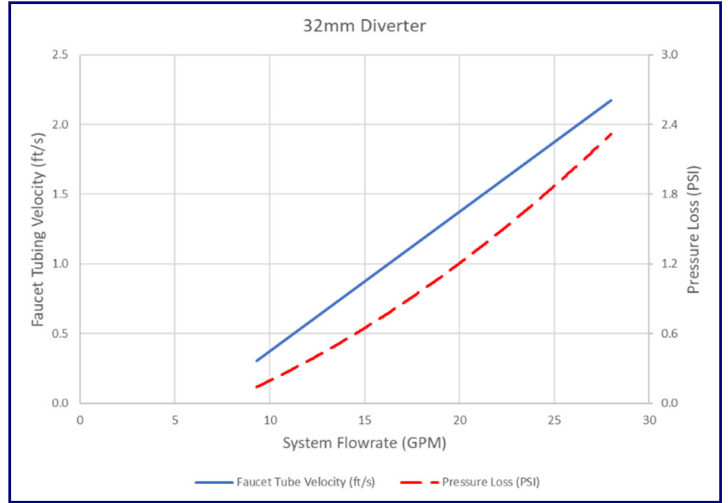
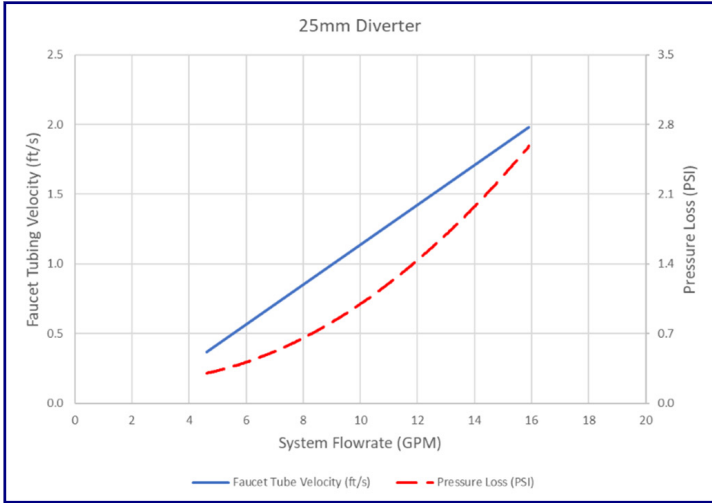
## DIMENSIONS:

Size		H (in)	L (in)
mm	inch		
25	3/4	3-5/8	7
32	1	3-7/8	7-1/2
40	1-1/4	3-3/4	7-7/8
50	1-1/2	3-7/8	8-1/2
63	2	4-1/8	10-1/4
75	2-1/2	4-1/2	11-7/5



# HIGH PURITY FAUCET DIVERTER

## FLOW CURVES:



# HIGH PURITY FAUCET DIVERTER

## FLOW CURVES (CONT.):

