

Dymatrix™

140° / 200° C STANDARD DIAPHRAGM VALVE

AVSDV-MT & AVSDV-HT

For the most aggressive temperature applications. High temperature SDV's are rated to 140° C & 200° C. These two-way diaphragm valves are the ideal solution for applications calling for compact, high life cycle, ultra-pure diaphragm valve with demanding temperature requirements. Available in pneumatic, manual multi-turn, and toggle actuation options.

MID-TEMP (140° C)

- Sizes: 1/4" - 1"
- Body Materials: PTFE
- Diaphragm: PTFE
- Connections: S-300
- Pneumatic: N/O, N/C
- Option: Indicator
- Manual multi-turn (push lock)
- Toggle operation:
- Option: 90-degree, 180-degree lock type

Parts	Chemical Resistance		Wetted Parts
	0	1	
Body	PTFE		○
Diaphragm	PTFE		○
Actuator	PVDF		
O-ring	EPDM/ FKM/ Viton F/ Kalrez 6190		
Metal Parts	SUS 304	SUS304 PTFE Coating	

HIGH-TEMP (200° C)

- Sizes: 1/4" - 1"
- Body Materials: PTFE
- Diaphragm: PTFE
- Connections: S-300
- Pneumatic: N/O, N/C
- Option: Indicator
- Manual multi-turn push lock
- Toggle operation: 180-degree lock type

Parts	Chemical Resistance		Wetted Parts
	0	1	
Body	PTFE		○
Diaphragm	PTFE		○
Actuator	PTFE/ PVDF		
O-ring	FKM/ Viton F/ Kalrez 6190		
Metal Parts	SUS 304	SUS304 PTFE Coating	

PNEUMATIC



DI Water Chemical Air Shut

MANUAL MULTI TURN



DI Water Chemical Manual Shut Flow Control

TOGGLE



DI Water Chemical Air Shut

AVNVM-HT



Sizes: 1/4"
Body Materials: PTFE
Diaphragm: PTFE
O-Ring: FKM/ Viton F/ Kalrez6190
Connections: S-300
Operation: Manual multi-turn

200° C NEEDLE VALVE

The high temperature needle valve provides ultra-precise flow control for critical high purity and chemical applications. The design features a parabolic shape that provides a linear flow rate across the full range of operation.

Medium	Material	
	PTFE	PPS
Hydrochloric Acid	⊙	⊙
Hydrogen Peroxide	⊙	○
Nitric Acid	⊙	△
Hydrofluoric Acid	⊙	○
Sulfuric Acid	⊙	⊙
Phosphoric Acid	⊙	⊙
Ammonium Hydroxide	⊙	⊙

**The referenced chemical compatibility is for reference purposes only and does not guarantee product performance.*



AVSAS-HT



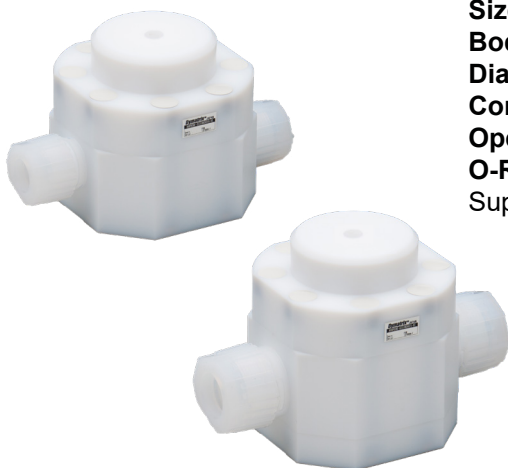
Sizes: 1/4"
Body Materials: PTFE
Diaphragm: PTFE
O-Ring (Non-wetted): FKM/ Viton F/ Kalrez6190
Connections: S-300
Operation: Pneumatic N/C

200° C SUCK BACK VALVE

The suck back valve allows for precise dosing by using suction to prevent dripping from outlets. It uses a single actuator for shut off and suck back for the most compact solution with high temperature media.



AVHPRL-HT / AVBPR-HT



Sizes: 3/4" - 1/4"
Body Materials: PTFE
Diaphragm: PTFE
Connections: S-300
Operation: Pneumatic N/C
O-Ring: FKM/ Viton F/ Kalrez6190
 Super high flow only

200° C PRESSURE REGULATORS

Pressure regulators smooth out variations in upstream pressure to meet the desired, downstream value. Back pressure regulators maintain adequate upstream pressure as upstream pressure reduces from branch line cycling.

