

NEW

SERIES 19 MULTIPACK® MAV ELECTRIC ACTUATORS



The Series 19 MAV MultiPack® is a multiturn actuator available as an on/off or modulating unit that mounts on Asahi/America Type-14 diaphragm valves and gate valves up to 4”.

FEATURES & BENEFITS:

- **Reversing, brushless DC motor:** Overall lower cycle time and torque output compared to traditional brushed motor
- **Reversing motor:** Precise flow control - the actuator is not required to travel the full stroke to begin the reverse stroke
- **Fast cycle speed:** 13 - 156 seconds
- **Powerful:** High torque output
- **Compact:** Perfect for OEM and skid manufacturers
- **Warranty:** Industry leading 3-year warranty

APPLICATIONS:

- Remote locations
- Locations with no air supply
- Colder temperatures
- Smaller valves
- Low cost applications



IDEAL INDUSTRIES:

- Aquarium & Aquaculture
- Chemical Processing
- Controlled Environmental Agriculture
- Food & Beverage
- Institutional
- Mining
- Power Generation
- Pulp & Paper
- Water & Wastewater Treatment
- Water Works/ Features

SERIES 19 ACTUATOR SIZE SELECTION CHART

Valve	Valve Size	C20	S20	S50	S110
Type-14 Diaphragm Valve (24 VAC/VDC)	1/2" - 1-1/4"		X		
	1-1/2" - 4"			X	
Type-14 Diaphragm Valve (95-265 VAC)	1/2" - 4"			X	
Type-C Gate Valve	1-1/2" - 4"			X	



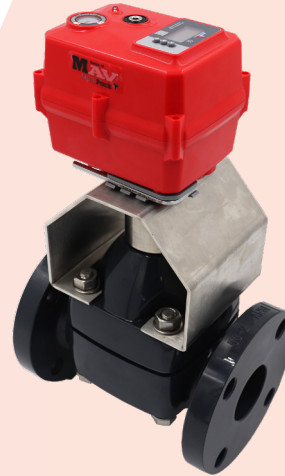
SERIES 19 MAV MULTIPACK®



DATA & SPECS

- **Multi-voltage:** 95 VAC to 265 VAC or 24 VAC/ VDC
- **Space Heater:** Internally wired to limit condensation
- **CE Compliant:** All actuators are CE labeled and compliant
- **75% Duty Cycle:** Extended duty cycle is ideal for high cycling applications
- **Auxiliary Contacts:** Open and closed dry contacts rated 0.1 Amp @ 250 VAC, 0.5 Amp @ 30 VDC
- **Alarm Contacts:** Dry contacts rated 0.1 Amp @ 250 VAC, 0.5 Amp @ 30 VDC for alarm status [over torque, as an example]
- **Simple Wiring:** Wiring technique is the same for all voltage units
- **ISO** mounting configuration
- **Gear Train:** Permanently lubricated steel gears

MOUNTS ON



Type-14 Diaphragm Valves
Sizes: 1/2" - 4"



Gate Valves
Sizes: 1-1/2" - 4"

OLED screen with SmartMenu

Push buttons for local control

Manual override with electroless nickle-plated hex key

QR code for easy and instant access to user manuals

LED light for position indication: **RED** closed, **GREEN** open, **BLUE** fault

Position indicator

NEMA 4X corrosion resistant enclosure

For wiring diagrams and other technical documents, please visit our website.

