

# POLYPURE Natural PP-R Piping System



PolyPure® natural polypropylene systems provide excellent high purity performance and cost effective installation. PolyPure® systems are specified and installed with confidence for a variety of high purity applications including USP purified water, institutional laboratory, deionized water and RO water systems.

PolyPure® is fully pressure rated to 150psi across the entire size range and does not derate in larger diameters like competitive systems.

## Supply Range

### Pipe and Fittings

- 20 - 110mm (1/2" - 4") SDR11, 150psi

### Valves

- T-342 diaphragm valves: 20 - 63mm (1/2" - 2")
- T-343 zero dead leg (ZDL) valves: 20 - 63mm (1/2" - 2")
- Ball valves: 20 - 63mm (1/2" - 2")
- 3" and 4" valves: Available in PP grey pigmented

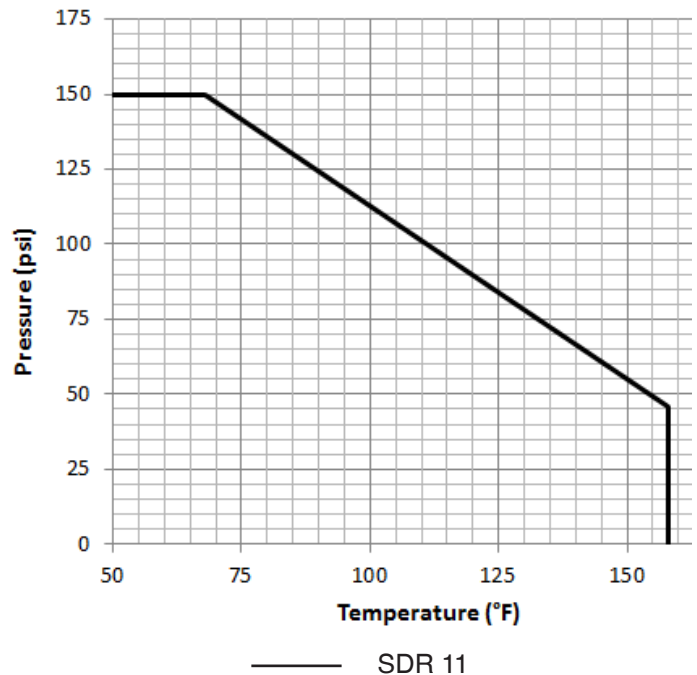
### Seals and O-rings

- Diaphragm valves and regulators: EPDM or PTFE
- Ball valves and unions: FKM (PTFE and EPDM available)

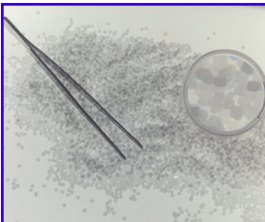
### Welding Methods



## Pressure Rating



## Resin & Manufacturing



The PolyPure® system uses a virgin, natural random copolymer polypropylene resin (PP-R) for its pipe, fittings and valves.

PolyPure® components are extruded and molded in a clean area. Pipe receives end sleeves and caps, and an outer full bag. Fittings and valves are brought to AGRU'S Plant 5 for automated cleaning and single bagging.

Pipe sizes 20 - 32mm (1/2" - 1") are bagged in multiple lengths per bag.

