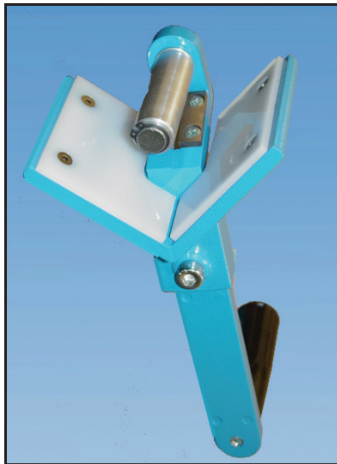


## Pipe Beveller SME-1

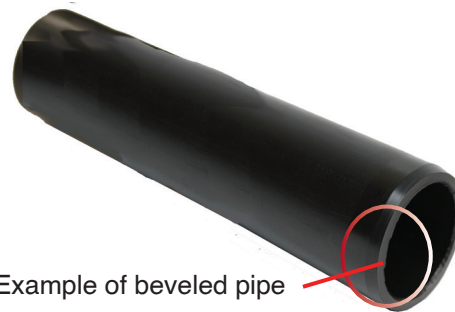
Part Number 5686003

### Beveling Tool



The SME-1 tool is ideal for beveling the ends of plastic pipe up to 63mm (2") that will be inserted into a socket fusion fitting.

Size range 32mm-125mm (1" - 4-1/2")



Example of beveled pipe

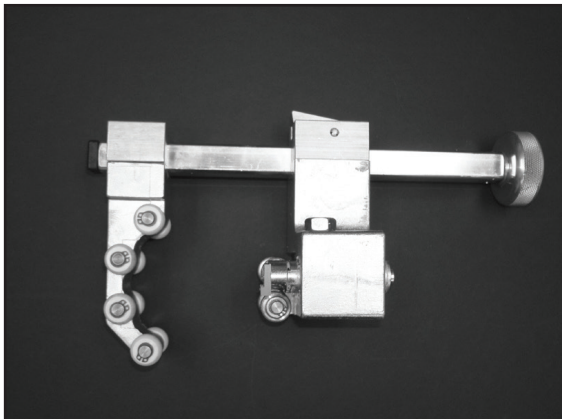
Note: Beveller used in place of PREP tool after mechanical scraping is performed.

## Rotational Scrapers

PFR 110 - Part Number 5831110

PFR 225 - Part Number 5832225

### Electrofusion Scraping Tool

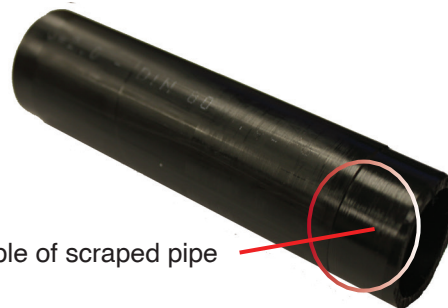


Asahi/America offers a wide range of scraping tools for a variety of sizes and applications. Please consult us for the best recommendation.

**Size Ranges** PFR 110 20mm - 125mm (1/2" - 4-1/2")  
PFR 225 90mm - 225mm (3" - 9")

### Features

- Adjustable depth
- Self-feeding



Example of scraped pipe