

# Series 92/94 Local Remote Stations



## Standard Features

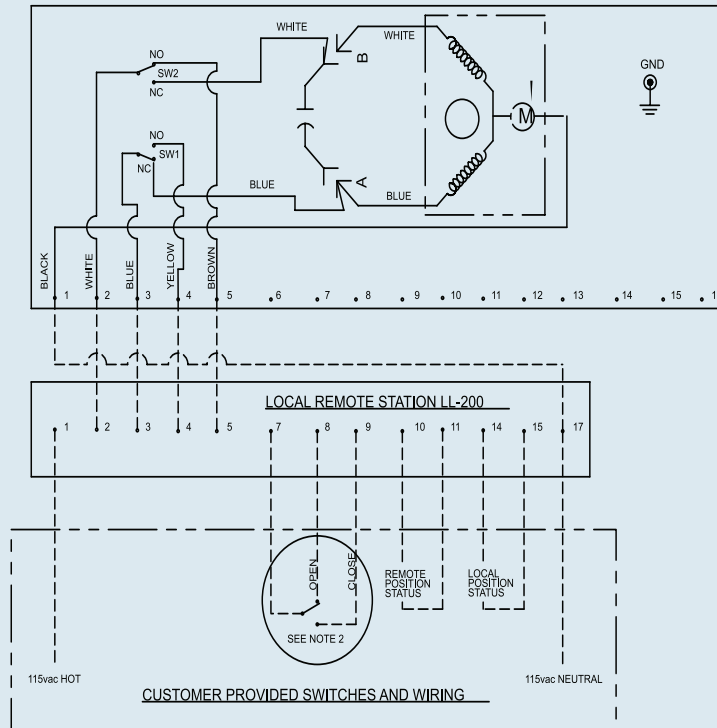
- Visual light indication
- Weatherproof enclosure constructed of fiberglass polyester
- Stainless steel trim
- Captive cover gasket
- Captive cover screws
- Two position selector switch (open and close)
- Three position selector switch (hand, off, auto)
- -40° F - 266° F temperature range

## Options

- Explosion proof enclosure
- 316 stainless steel enclosure
- Contact factory for specific applications

LL-200 is to be used in conjunction with Series 92 or 94, AC powered and on/off actuator.

SERIES 92 OR SERIES 94 115 VAC ELECTRIC ACTUATOR  
ACTUATOR SHOWN IN COUNTER-CLOCKWISE EXTREME OF TRAVEL, OR "OPEN" POSITION



**NOTE:**

1. LOCAL REMOTE STATION IS NOT CLOSE COUPLED TO ACTUATOR. FIELD WIRING OF LOCAL REMOTE STATION TO ACTUATOR IS TO BE PERFORMED BY OTHERS.

2. CUSTOMER PROVIDED SWITCH INSTALLED AT TERMINALS 7, 8, & 9 IS FOR REMOTE USE ONLY.

# Series 92/94 Local Remote Stations



**PT-100**

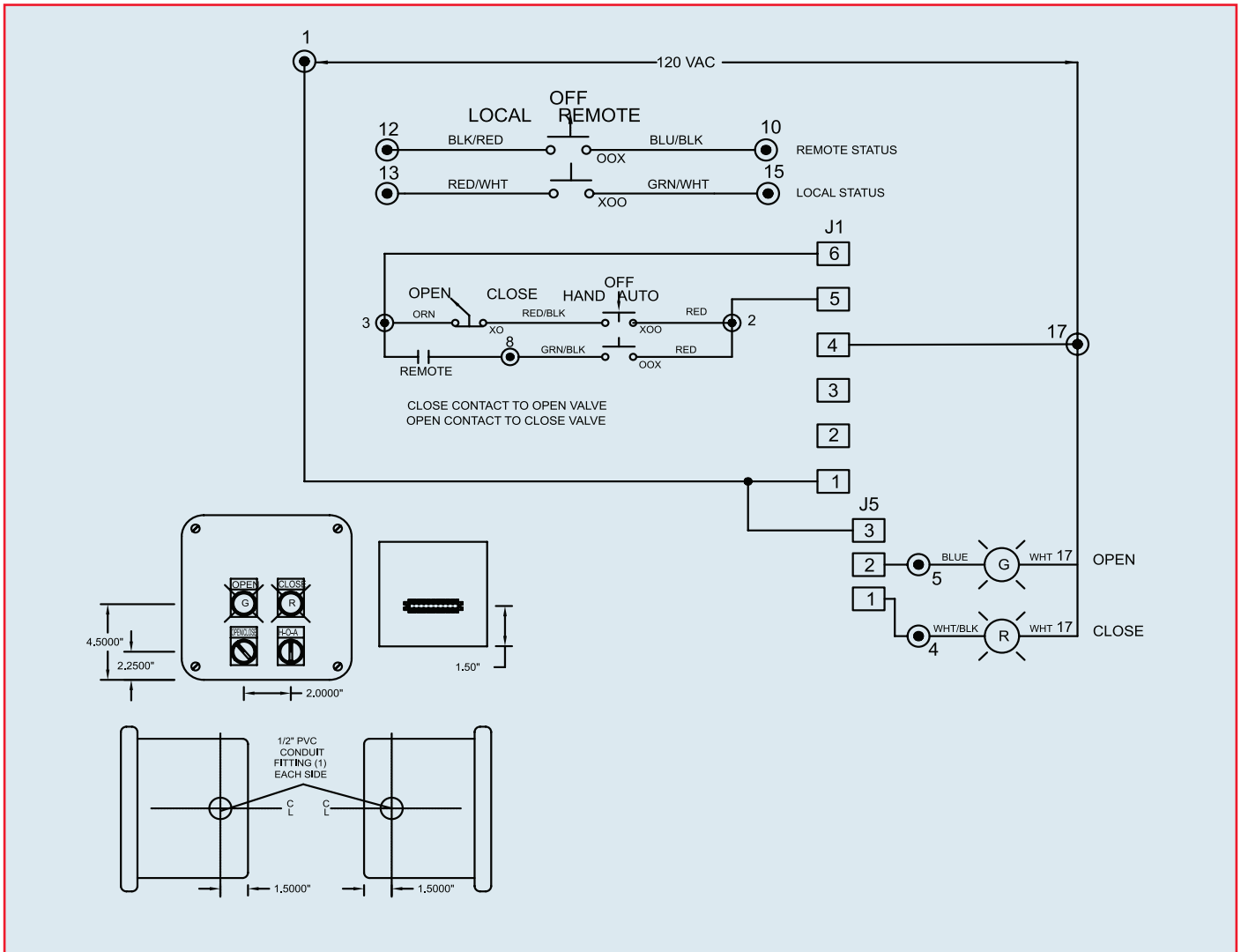
PT-100 is to be used in conjunction with Series 92 or 94 with Protek battery pack.

## Standard Features

- Weatherproof enclosure constructed of fiberglass polyester
- Stainless steel trim
- Captive cover gasket
- Captive cover screws
- Two position selector switch (open and close)
- Two position selector switch (local/ remote)
- -40° F - 266° F temperature range

## Options

- 316 stainless steel enclosure
- Contact factory for specific applications



# Series 92/94 Local Remote Stations



**PK-100**

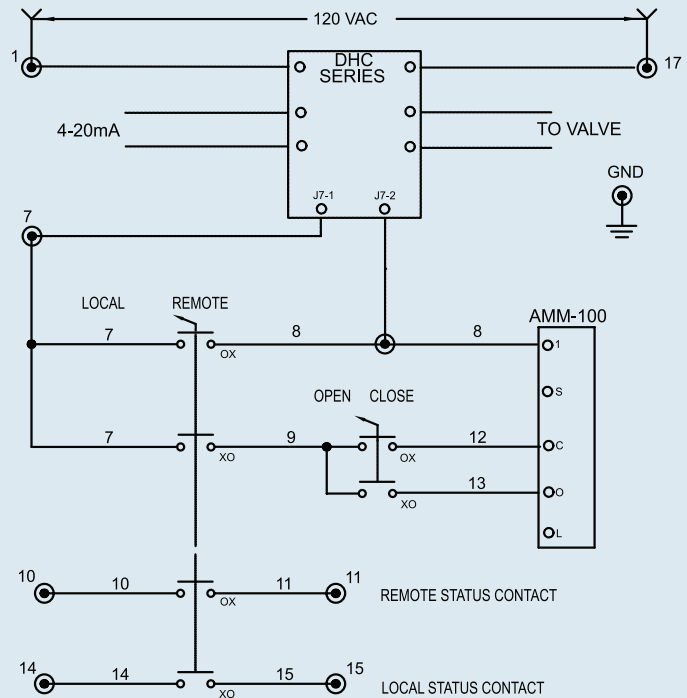
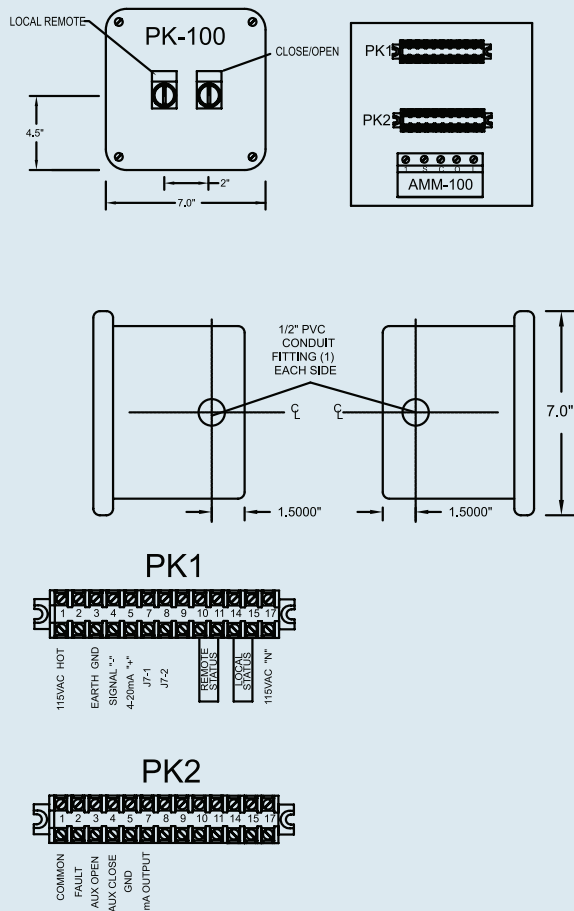
PK-100 is to be used in conjunction with Series 92 or 94, AC powered and DHC-Series positioner card.

## Standard Features

- Weatherproof enclosure constructed of fiberglass polyester
- Stainless steel trim
- Captive cover gasket
- Captive cover screws
- Two position selector switch (open and close)
- Two position selector switch (local/remote)
- -40° F - 266° F temperature range

## Options

- Explosion proof enclosure
- 316 stainless steel enclosure
- Contact factory for specific applications



**Note:**

1. Local remote station is not close coupled to actuator. Field wiring of local remote station to actuator is to be performed by others.

# Series 10P Local Remote Stations



LL-200 is to be used in conjunction with Series 10, AC powered and on/off actuator.

## Standard Features

- Visual light indication
- Weatherproof enclosure constructed of fiberglass polyester
- Stainless steel trim
- Captive cover gasket
- Captive cover screws
- Two position selector switch (open and close)
- Three position selector switch (hand, off, auto)
- -40° F - 266° F temperature range

## Options

- Explosion proof enclosure
- 316 stainless steel enclosure
- Contact factory for specific applications

- NOTE:**
1. LOCAL REMOTE STATION IS NOT CLOSE COUPLED TO ACTUATOR. FIELD WIRING OF LOCAL REMOTE STATION TO ACTUATOR IS TO BE PERFORMED BY OTHERS.
  2. CUSTOMER PROVIDED SWITCH INSTALLED AT TERMINALS 7, 8, & 9 IS FOR REMOTE USE ONLY.
  3. EACH ACTUATOR MUST BE POWERED THROUGH ITS OWN INDIVIDUAL SWITCH CONTACTS TO AVOID CROSS FEED.

